

**LGBTQ+ PRIDE
MONTH ACTIVITY
PACK**

ALL ABOUT PRIDE MONTH

a teeny tiny bit of
history all about
pride month

What is it

June is Pride Month, organised to remember the Stonewall riots which took place at the end of June 1969. Since then, Pride events have since taken place in this month to recognise the contribution of activists and to celebrate the wonderfully diverse LGBTQ+ community. It will look very different during a pandemic, but that doesn't mean you cannot celebrate it!

LGBTQ+ terms

The list of LGBTQ+ terminology is ever expanding. It is important to know the terms used so you have a greater understanding of the diversity that exists within society. Check out this glossary to read more:

<https://www.theproudtrust.org/resources/resource-downloads/glossary/>

Pride parades and protest

As well as being a celebration, Pride is a time of peaceful protest. Lots of towns and cities will have pride parades, parties, community events, etc. These are often televised or feature in the media. This is a good opportunity to raise awareness of current issues facing the LGBTQ+ community to promote positive change for the future.

Useful websites

To get you started, all sites have a list of additional recommended sites you can explore:

- [theproudtrust.org](https://www.theproudtrust.org)
- [mermaids.org.uk](https://www.mermaids.org.uk)
- [lgbt.foundation](https://www.lgbt.foundation)
- [stonewall.org.uk](https://www.stonewall.org.uk)
- [lgbtyouth.org.uk](https://www.lgbtyouth.org.uk)
- [mosaic-youth.org.uk](https://www.mosaic-youth.org.uk)
- [genderedintelligence.co.uk](https://www.genderedintelligence.co.uk)

Accessing groups

There are lots of opportunities to celebrate your pride this month. Follow the links on this page and read what other organisations have planned. There is so much, from meditation classes to virtual Prides. If your identity is not being accepted in your home, these organisations are there for you. We see you - we are here for each and every one of you.

Be bold, be you

It is times like these that communities need to pull together more than ever.

We want you to know that if you identify as LGBTQ+ you are not alone.

If you don't - then keep reading, learn how to be an ally to your LGBTQ+ friends and family. Together we can create a more equal world.



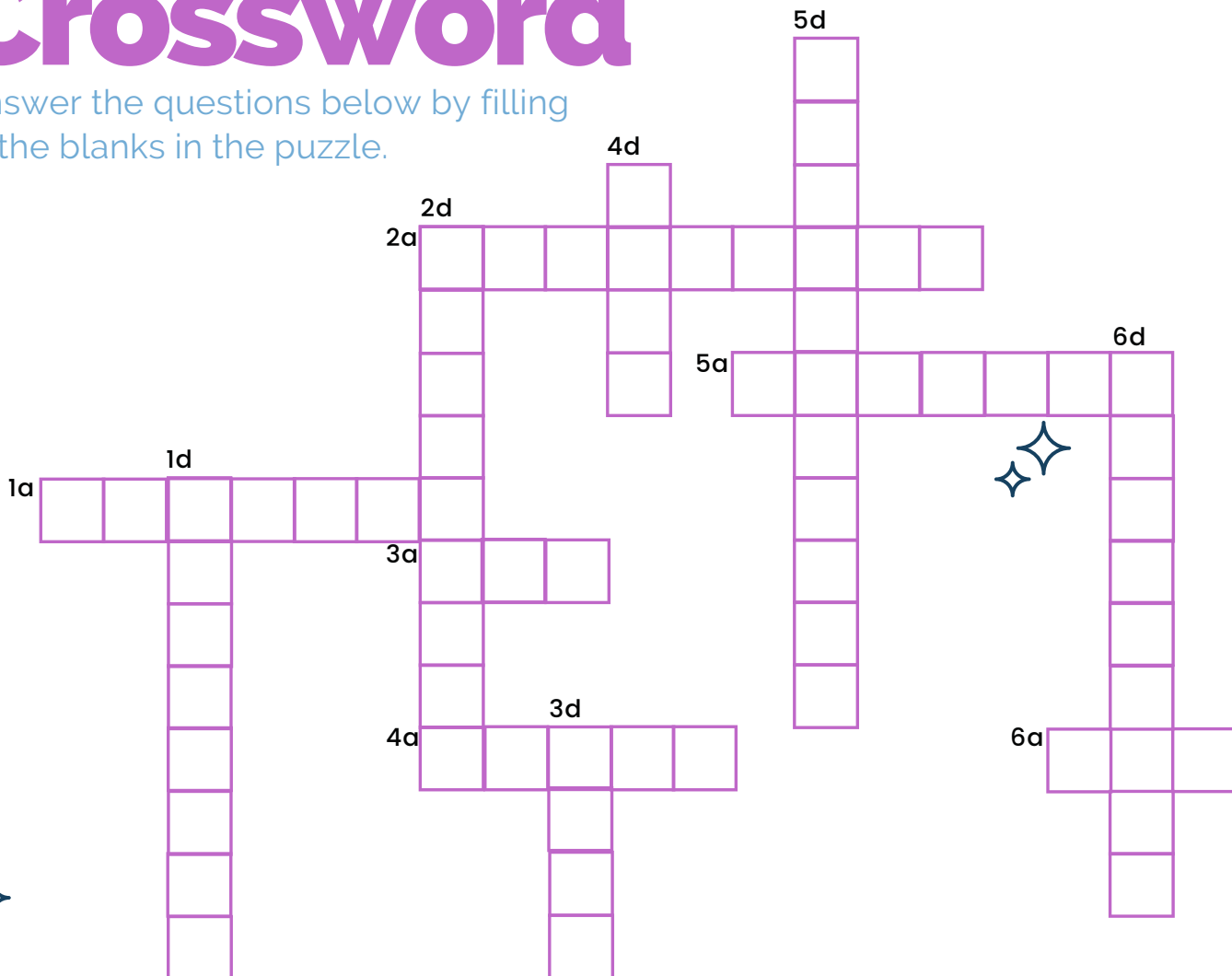
How to be an ally

SOME TOP TIPS TO BEING AN LGBTQ+ ALLY

1. Do your research, do not rely on your LGBTQ+ friends and family to teach you.
2. Be willing to learn a new language, there are lots of terms within the LGBTQ+ umbrella. It is important to know them.
3. Don't assume that everybody you meet is straight and/ or cisgender.
4. Challenge homophobic, biphobic, transphobic language if you hear it.
5. Believe that people should be treated with dignity and respect - these are the fundamentals of human rights.
6. Challenge your own beliefs if you have prejudices and bias.
7. Celebrate LGBTQ+ people.
8. Don't make harmful LGBTQ+ jokes, and if you hear them - don't stay silent - let people know why they are offensive.
9. Be open minded and willing to talk.
10. Remember that LGBTQ+ families exist and this is something to be celebrated.

Pride Month Crossword

Answer the questions below by filling in the blanks in the puzzle.



ACROSS

- 1a - Refers to a woman who has a romantic and/or sexual orientation towards women. Some non-binary people may also identify with this term.
- 2a - Someone whose gender identity is the same as the sex they were assigned at birth. Non-trans is also used by some people.
- 3a - Refers to a man who has a romantic and/or sexual orientation towards men. Some women define themselves as this rather than lesbian. Some non-binary people may also identify with this term.
- 4a - An umbrella term to describe people whose gender is not the same as, or does not sit comfortably with, the sex they were assigned at birth.
- 5a - Words we use to refer to people's gender in conversation - for example, 'he' or 'she'. Some people may prefer others to refer to them in gender neutral language.
- 6a - Refers to a person whose romantic and/or sexual attraction towards others is not limited by sex or gender.

DOWN

- 1d - Refers to a man who has a romantic and/or sexual orientation towards women or to a woman who has a romantic and/or sexual orientation towards men.
- 2d - When a person first tells someone/others about their orientation and/or gender identity. (6, 3)
- 3d - A (typically) straight and/or cis person who supports members of the LGBT community.
- 4d - The acronym for lesbian, gay, bi and trans.
- 5d - A person's innate sense of their own gender, whether male, female or something else (see non-binary below), which may or may not correspond to the sex assigned at birth. (6, 8)
- 6d - An umbrella term for people whose gender identity doesn't sit comfortably with 'man' or 'woman'. Non-binary identities are varied and can include people who identify with some aspects of binary identities, while others reject them entirely. (3, 6)

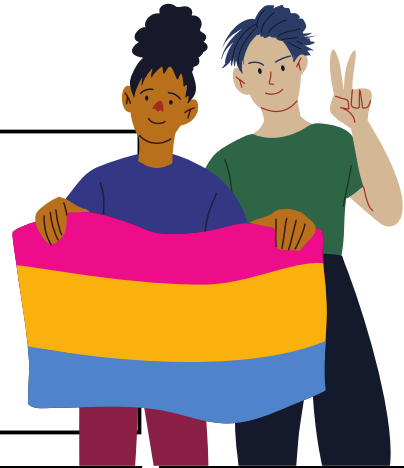
***terminology from Stonewall glossary of terms**

MY PRIDE ALLY CALENDAR

Create your own event calendar by drawing symbols of the ways you are going to celebrate your pride in each month.

Or

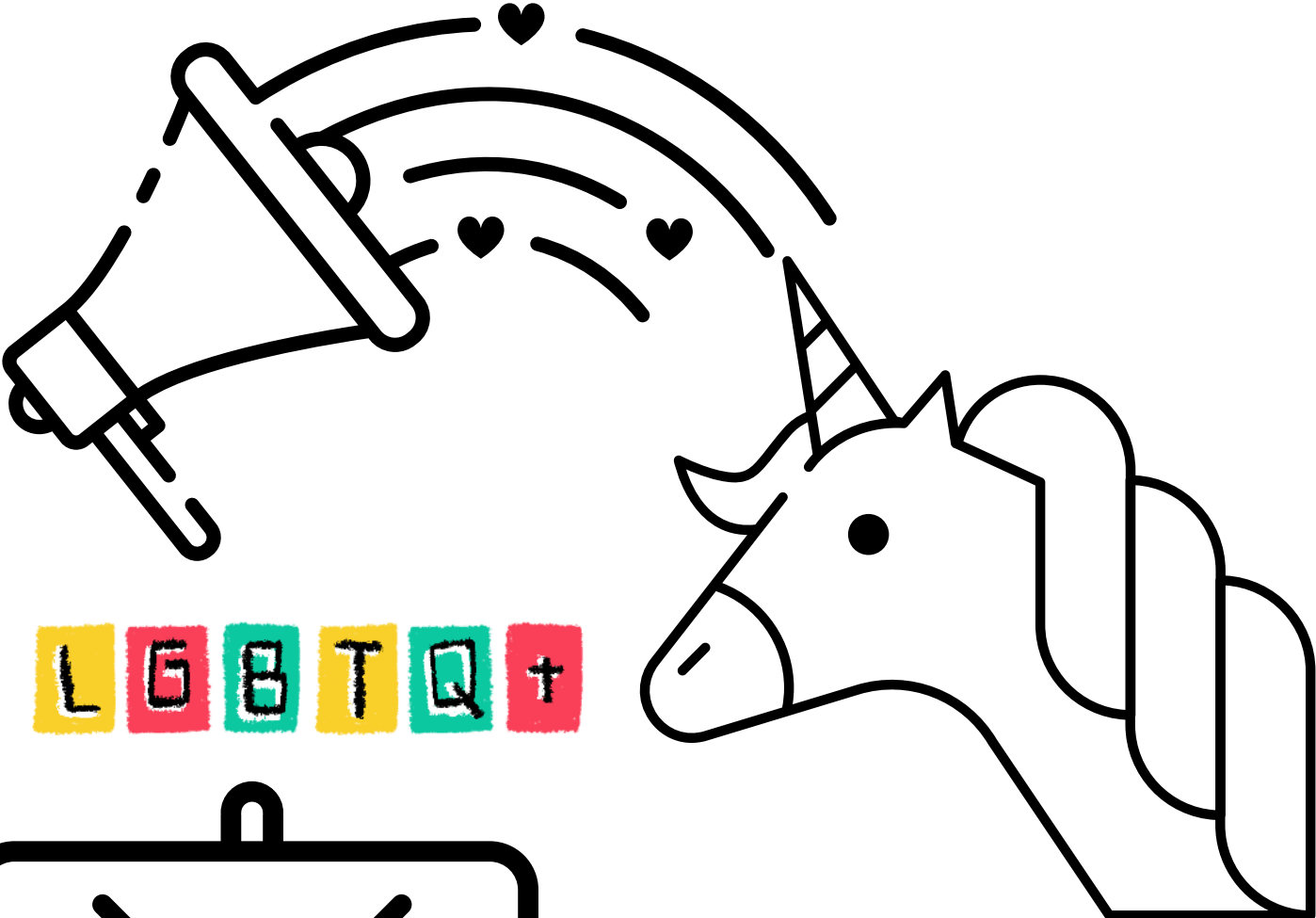
Show how you are going to be an ally, not just for pride month, but during every month.



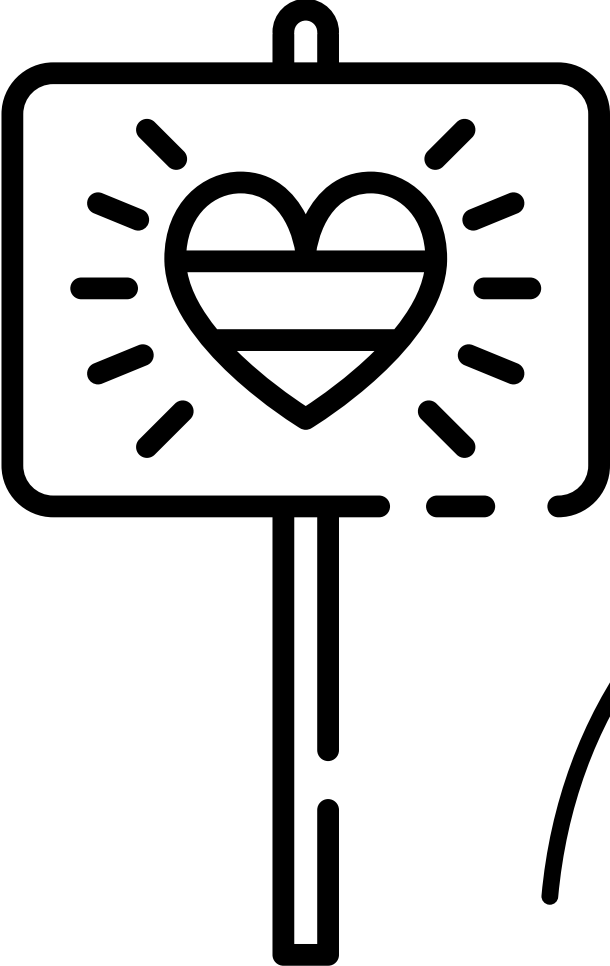
JANUARY	FEBRUARY	MARCH	APRIL
MAY	JUNE	JULY	AUGUST
SEPTEMBER	OCTOBER	NOVEMBER	DECEMBER

Pride mindful colouring

Brighten up this page in your own unique way



L G B T Q +



PRIDE BINGO

Cross out the LGBTQ+ role models
you have read about:

Sam Smith	Harvey Milk	Ellen Degeneres	Sarah Paulson
Laverne Cox	Freddie Mercury	Elton John	Karl Ulrichs
Barbara Gittings	Megan Rapinoe	Ezra Miller	Jamie Clayton
Cara Delavigne	Sylvia Rivera	Ellen Page	Hunter Schafer



DUALFREQUENCY.CO.UK